

DRC: DEMOCRATIC REPUBLIC OF CONGO

➤ COUNTRY FOCUS

API SUMMIT – SEPTEMBER 2021



CUSHMAN &
WAKEFIELD

broll

Progressive
property people

GEOGRAPHY & DEMOGRAPHICS



Population	2010	2015	2020
Kinshasa			17 m
Mbuji-Mayi			3.5 m
Lubumbashi			2.3 m
Kananga			1.4 m
DRC Total	64.5m	76.2m	89.5m

ECONOMIC INDICATORS



	2010	2015	2020
Exchange rate (to USD)	901	913	1 965
GDP	USD 21.5b (7.1%)	USD 37.9b (6.9%)	USD 49.8b (0.7%)
Inflation	7.1%	1.4%	6.7%
Interest rates	56.5%	19.3%	25.9%
GNS (% of GDP)	19.9%	13.3%	20.6%

ACCESS TO FINANCE

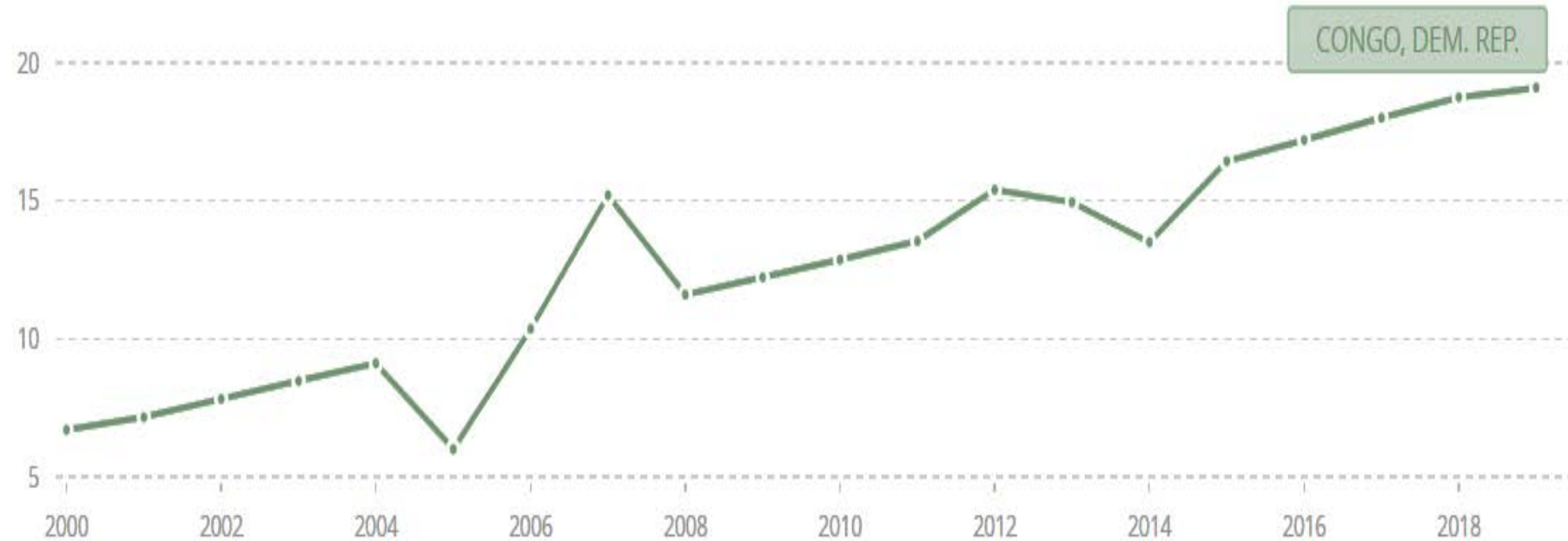


- 1 Equity Commercial Bank
- 2 Banque Internationale pour l'Afrique (BIAC)
- 3 FBN Bank DRC
- 4 Citibank
- 5 Standard Bank Congo
- 6 Rawbank
- 7 Ecobank DRC
- 8 Trust Merchant Bank
- 9 Afriland First Bank
- 10 Access Bank DRC

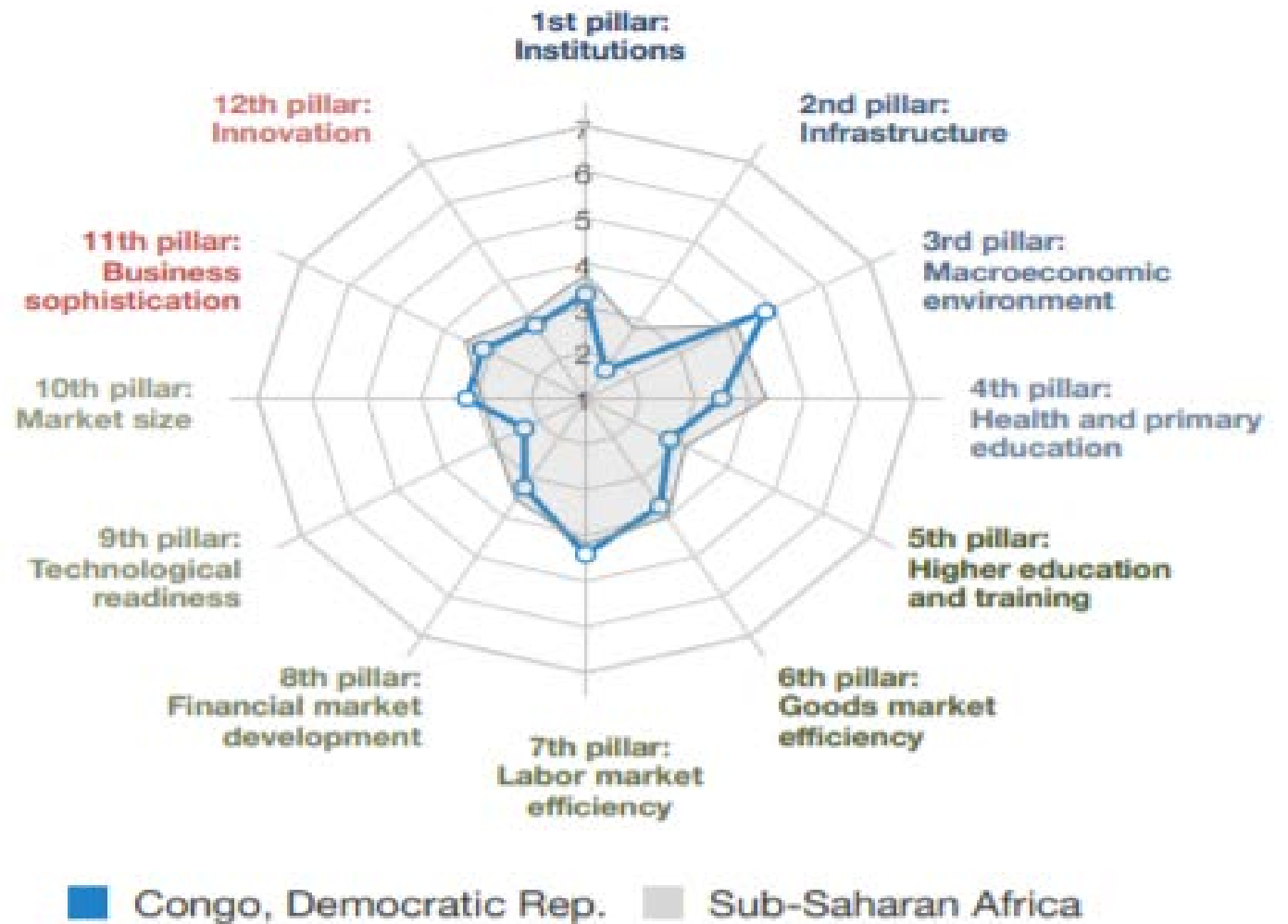
INFRASTRUCTURE - TRANSPORT



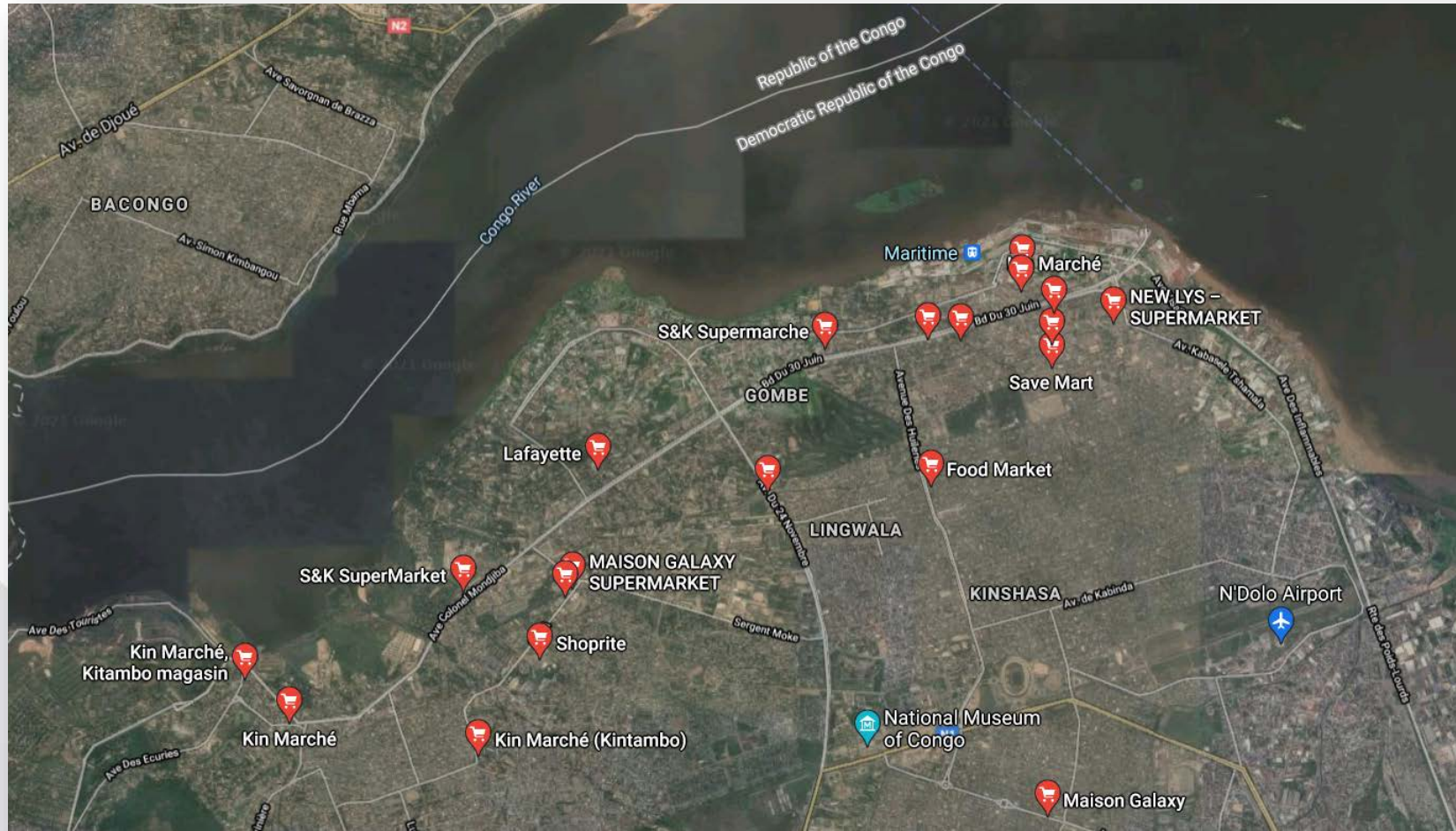
INFRASTRUCTURE – SERVICES



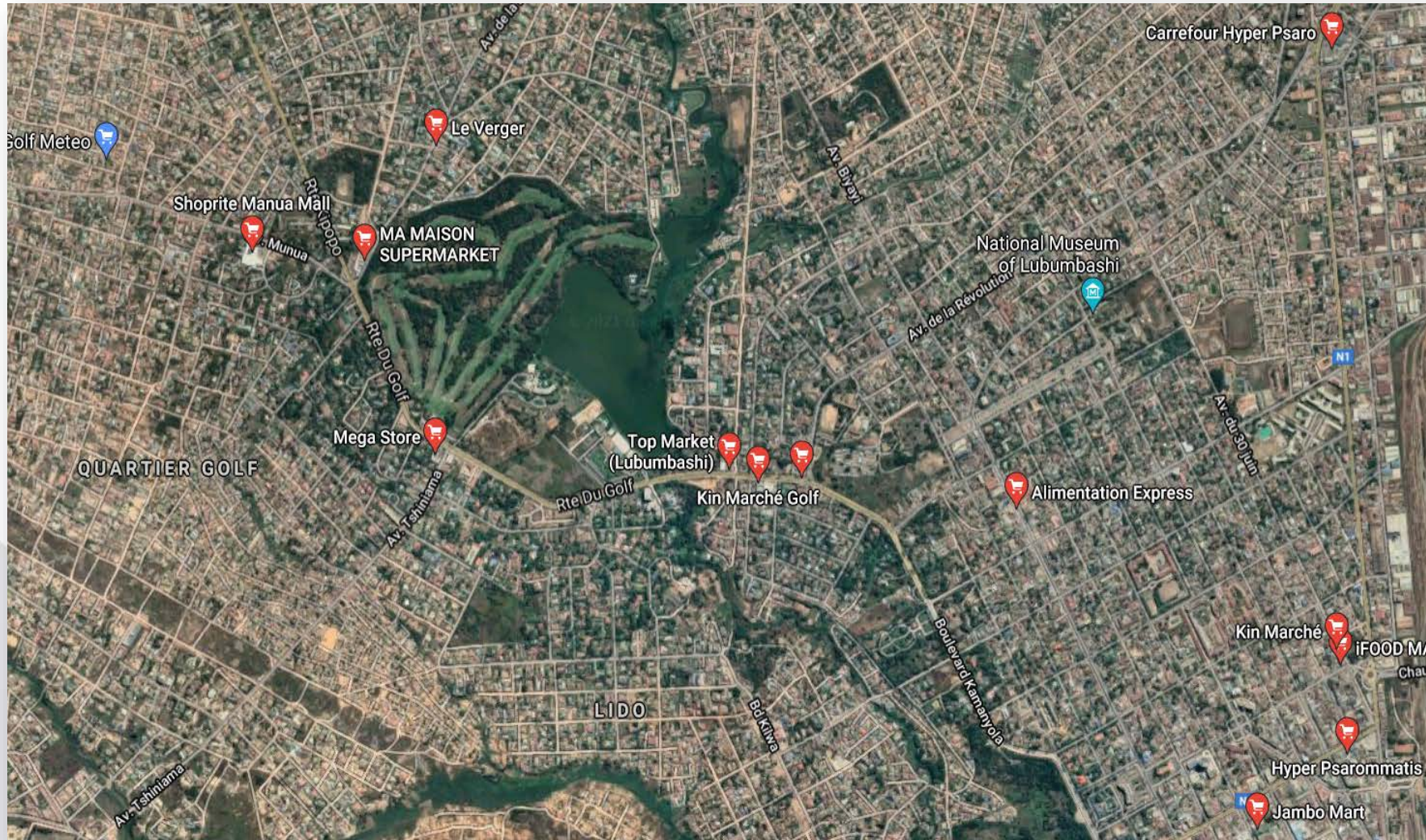
KEY PILLARS



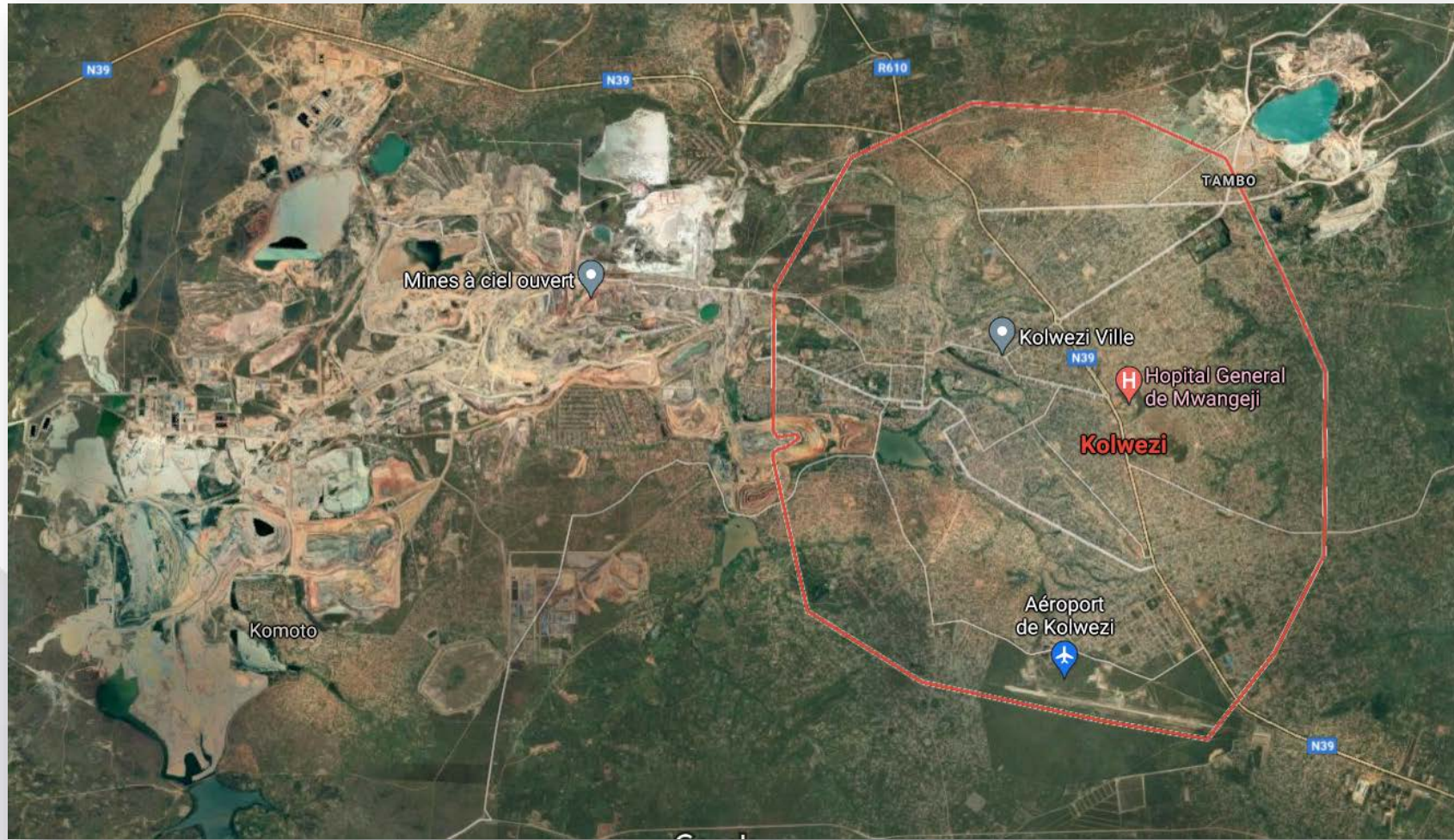
KINSHASA



LUBUMBASHI



KOLWEZI





DATA CENTRES

	2010	2015	2020
Mobile Subscription (mobile phones per 100 people)	18	37	46
Internet users	0.72%	3.8%	24%

ITA launches high-speed fibre link between Angola and DRC

Sep 7, 2021

[ITA launches high speed fibre link between angola and DRC](#)

HOSPITALITY: KINSHASA

EXISTING SUPPLY

Hotel	Location	Opening Year	Key count	Standard	Brand Affiliation
Pullman Kinshasa Grand Hotel	Kinshasa		190	Upper Upscale Class	Pullman
Hotel Memling	Kinshasa	1937	180	Upper Upscale Class	Independent
Hotel Fleuve Congo	Kinshasa		237	Luxury Class	Independent
Sultani Hotel	Kinshasa		56	Upper Midscale Class	Independent
Hotel Royal Kinshasa	Kinshasa	2015	75	Upper Midscale Class	Independent
Beatrice Hotel	Kinshasa	2015	130	Upscale Class	Independent
Kin Plaza Arjaan by Rotana	Kinshasa	Q4 2016	101	Upscale Class	Arjaan by Rotana
Total:			969		

Source: HTI Consulting

FUTURE SUPPLY

Hotel	Location	Key count	Planned Opening Date	Status	Brand Affiliation	Standard
DoubleTree by Hilton Kinshasa The Stanley	Kinshasa	104	TBC	Deferred	DoubleTree by Hilton	Upscale Chains
Hilton Kinshasa	Kinshasa	178	TBC	In Construction	Hilton	Upper Upscale Chains
Hilton Garden Inn Kinshasa	Kinshasa	128	TBC	In Construction	Hilton Garden Inn	Upscale Chains
Novotel Kinshasa	Kinshasa	115	TBC	Final Planning	Novotel	Upscale Chains

Source: HTI Consulting



HOSPITALITY: REST OF THE COUNTRY

EXISTING SUPPLY				
Hotel	Location	Key count	Standard	Brand Affiliation
Pullman Lubumbashi Grand Karavia	Lubumbashi	197	Upper Upscale Class	Pullman
Goma Serena Hotel	Goma	109	Upper Upscale Class	Serena

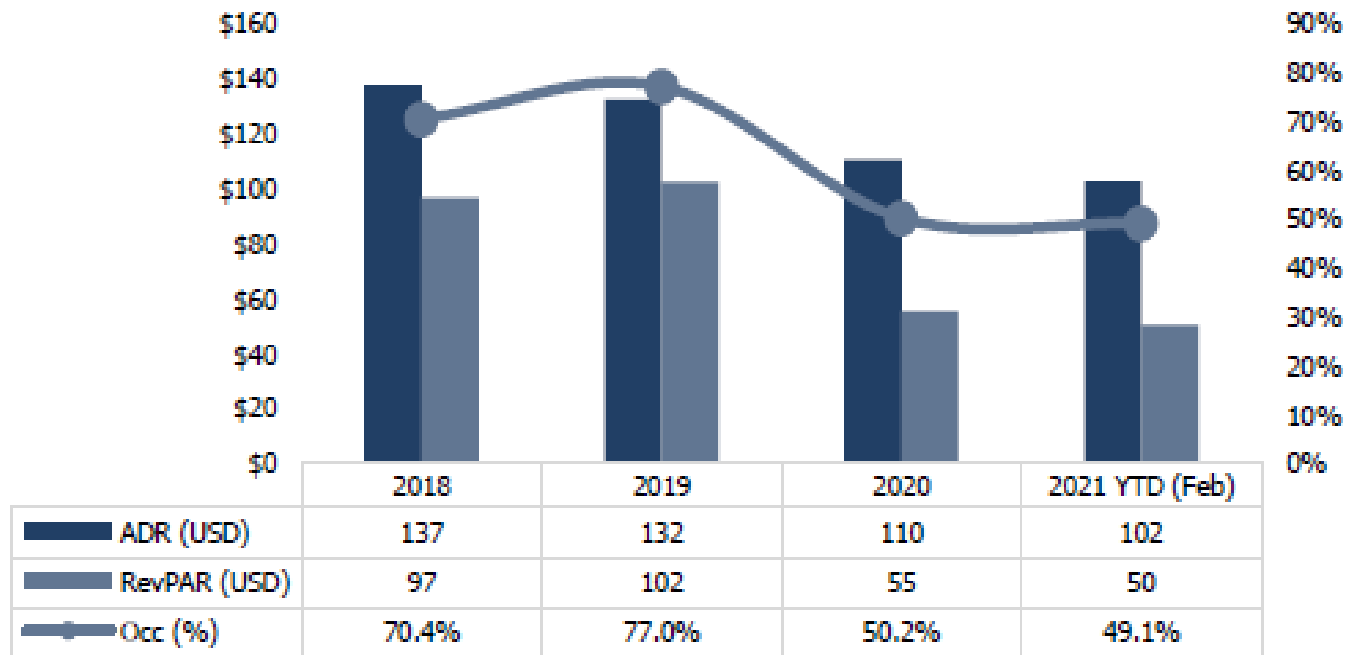
Source: HTI Consulting

FUTURE SUPPLY					
Hotel	Location	Key count	Status	Brand Affiliation	Standard
Novotel CHIC Lubumbashi	Lubumbashi	120	In Construction	Novotel	Upscale Chains
BON Hotel Karibu Kolwezi	Kolwezi	55	Deferred	Independent	Independents
Novotel CHIC Kolwezi	Kolwezi	104	Final Planning	Novotel	Upscale Chains

Source: HTI Consulting

HOSPITALITY

Average Daily Rate (ADR), Revenue per Available Room (RevPAR) & Occupancy



Source: HTI Consulting

METRICS:

- Stabilising ADR, RevPAR and Occupancy levels
- Although they have not yet returned to pre 2020 levels.

MARKET SUMMARY:

- One of the biggest economy of Francophone Africa with a huge population, different economic centres (secondary cities of importance, unlike Senegal or Ivory Coast) and a lot of economic potential but such limited branded supply.
- In Kinshasa, less than 30% of room inventory is internationally branded (since Kempinski pulled out of Fleuve Congo).

REAL ESTATE INDICATORS



SUPPLY	Kinshasa	Lubumbashi
Office	▲	▲
Industrial	▲	▶
Retail	▲	▲
Residential	▲	▶

RENTAL MOVEMENTS	Kinshasa	Lubumbashi
Office	▶	▶
Industrial	▲	▶
Retail	▶	▼
Residential	▼	▼

KEY TRENDS



Broll Property Group (Pty) Ltd has taken every care in the preparation of this report. The sources of information used are believed to be accurate and reliable, but no guarantee of accuracy or completeness can be given. Neither Broll Property Group, nor any director, representative or employee of Broll Property Group, accepts liability for any direct or consequential loss arising from the use of this document or its content. The information and opinions contained in this report are subject to change without notice. No part or parts of this report may be stored in a retrieval system or reproduced or transmitted in any form or by any means, electronic, mechanical, reprographic, recording or otherwise, now known or to be devised, without prior consent from Broll Property Group.

THANK YOU

CONTACT:

PATRICK KATABUA

SEPTEMBER 2021



CUSHMAN &
WAKEFIELD

broll

Progressive
property people